

Sonata N°1

J. S. Bach

Andante

Flauto  
alto

Handwritten musical score for the first section of J.S. Bach's Sonata No. 1, marked Andante. It consists of four staves of music in G major (one sharp) and 3/4 time. The notation includes various note values, rests, and slurs. A box containing the number 5 is present on the second staff. The word "claro m." is written above the fourth staff.

Presto

Handwritten musical score for the second section of J.S. Bach's Sonata No. 1, marked Presto. It consists of six staves of music in G major and 3/4 time. The notation is more complex, featuring many sixteenth and thirty-second notes. Boxed numbers 15, 20, and 25 are visible, indicating measure numbers. The section ends with a double bar line on the sixth staff.

Four empty musical staves at the bottom of the page.



Allegro

Handwritten musical score for a piece in 3/4 time, marked Allegro. The score consists of 12 staves of music in G major (one sharp). It features a variety of note values including eighth, sixteenth, and thirty-second notes, often beamed together in rapid passages. Bar lines are present throughout. Measure numbers 5, 10, 15, 20, 25, 30, 35, 40, and 45 are indicated above the staves. There are some handwritten annotations: "sol" above a note on staff 5, and "sol" and "b" above notes on staff 10. The paper is aged and slightly discolored.



Handwritten musical score for a piece in B-flat major, 3/4 time. The score is written on ten staves, with the first five staves containing the main melody and the last five staves containing the accompaniment. The piece is divided into three sections: *Adagio*, *Menuet I*, and *Menuet II*.

The *Adagio* section (staves 1-5) begins with a treble clef and a key signature of two flats. It features a melodic line with various ornaments, including trills and grace notes, and a bass line with chords and single notes. The tempo marking *Adagio* is written above the first staff. The section ends with a double bar line and a repeat sign.

The *Menuet I* section (staves 6-10) begins with a treble clef and a key signature of two flats. It features a melodic line with various ornaments, including trills and grace notes, and a bass line with chords and single notes. The tempo marking *Menuet I* is written above the sixth staff. The section ends with a double bar line and a repeat sign.

The *Menuet II* section (staves 11-15) begins with a treble clef and a key signature of two flats. It features a melodic line with various ornaments, including trills and grace notes, and a bass line with chords and single notes. The tempo marking *Menuet II* is written above the eleventh staff. The section ends with a double bar line and a repeat sign.

The final section (staves 16-20) begins with a treble clef and a key signature of two flats. It features a melodic line with various ornaments, including trills and grace notes, and a bass line with chords and single notes. The tempo marking *Menuet I* is written above the sixteenth staff. The section ends with a double bar line and a repeat sign.

Adagio ma non tanto

Sonata II.

Handwritten musical score for Sonata II, Adagio ma non tanto. The score consists of 14 staves of music in G major (one sharp) and 3/4 time. The first section is marked 'Adagio ma non tanto' and ends with a double bar line. The second section is marked 'Allegro' and begins with a new key signature of two flats (B-flat major). The score includes various musical notations such as notes, rests, accidentals, and dynamic markings like 'tr' (trill) and 'w' (accidental). Measure numbers 10, 15, 20, 25, 30, 35, and 40 are indicated in boxes.

A handwritten musical score consisting of 12 staves. The notation is in a single system, likely for a piano or guitar. The key signature is one flat (B-flat), and the time signature is 4/4. The music features a variety of note values, including eighth, sixteenth, and thirty-second notes, as well as rests and ties. There are several measures with repeat signs (double bar lines with dots). The score includes several measures with repeat signs and measure numbers in boxes: 15, 20, 25, 30, 35, 40, 45, and 50. The handwriting is in black ink on white paper.

Handwritten musical score, measures 55-65. The notation is in treble clef with a key signature of one flat (B-flat). The music features a series of eighth and sixteenth notes, often beamed together. Measure 60 is marked with a box containing '60'. Measure 65 is marked with a box containing '65'. There are some corrections and scribbles in measures 58 and 59.

Andante  $\frac{3}{4}$   $\frac{5}{4}$  1

Handwritten musical score, measures 66-75. The notation is in treble clef with a key signature of one flat (B-flat). The music features a series of eighth and sixteenth notes, often beamed together. Measure 66 is marked with a box containing '1'. Measure 70 is marked with a box containing '10'. Measure 75 is marked with a box containing '15'. There are some corrections and scribbles in measures 72 and 73.

Handwritten musical score, measures 76-85. The notation is in treble clef with a key signature of one flat (B-flat). The music features a series of eighth and sixteenth notes, often beamed together. Measure 76 is marked with a box containing '20'. Measure 80 is marked with a box containing '25'. Measure 85 is marked with a box containing '30'. There are some corrections and scribbles in measures 82 and 83.

Handwritten musical score, measures 86-95. The notation is in treble clef with a key signature of one flat (B-flat). The music features a series of eighth and sixteenth notes, often beamed together. Measure 86 is marked with a box containing '35'. Measure 90 is marked with a box containing '40'. There are some corrections and scribbles in measures 88 and 89.



Handwritten musical score, measures 45 to 55. The notation is in treble clef with a key signature of one flat (B-flat). The music features a complex, flowing melody with many beamed sixteenth and thirty-second notes, often grouped in pairs or groups of four. Measure numbers 45, 50, and 55 are boxed above the staff.

*Allegro*

Handwritten musical score, measures 56 to 61. The notation continues in treble clef with a key signature of one flat. The melody remains highly active with frequent beamed notes. Measure numbers 56, 57, 58, 59, 60, and 61 are boxed above the staff.

Handwritten musical score, measures 62 to 67. The notation continues in treble clef with a key signature of one flat. Measure numbers 62, 63, 64, 65, 66, and 67 are boxed above the staff.

Handwritten musical score, measures 68 to 73. The notation continues in treble clef with a key signature of one flat. Measure numbers 68, 69, 70, 71, 72, and 73 are boxed above the staff.

Handwritten musical score, measures 74 to 79. The notation continues in treble clef with a key signature of one flat. Measure numbers 74, 75, 76, 77, 78, and 79 are boxed above the staff.

Handwritten musical score, measures 80 to 85. The notation continues in treble clef with a key signature of one flat. Measure numbers 80, 81, 82, 83, 84, and 85 are boxed above the staff.

Handwritten musical score, measures 86 to 91. The notation continues in treble clef with a key signature of one flat. Measure numbers 86, 87, 88, 89, 90, and 91 are boxed above the staff.

Handwritten musical score, measures 92 to 97. The notation continues in treble clef with a key signature of one flat. Measure numbers 92, 93, 94, 95, 96, and 97 are boxed above the staff.

Handwritten musical score, measures 98 to 103. The notation continues in treble clef with a key signature of one flat. Measure numbers 98, 99, 100, 101, 102, and 103 are boxed above the staff.

Handwritten musical score, measures 104 to 109. The notation continues in treble clef with a key signature of one flat. Measure numbers 104, 105, 106, 107, 108, and 109 are boxed above the staff.

Empty musical staves at the bottom of the page.

Handwritten musical score for a piano sonata, featuring multiple staves with complex notation, including many beamed sixteenth and thirty-second notes, and various musical markings like bar lines, repeat signs, and dynamic markings.

Measures 45, 50, 55, 60, 65, 70, 75, 80, 85 are marked with brackets above the staves.

*Adagio ma non tanto*

*Sonata III*



Handwritten musical score for the first system, measures 1-12. The notation is in treble clef with a key signature of one flat (B-flat). The music features a complex melody with many beamed sixteenth and thirty-second notes, often grouped in threes. There are several trills (tr) and slurs. Measure numbers 10 and 11 are indicated in boxes. The system ends with a double bar line.

Allegro

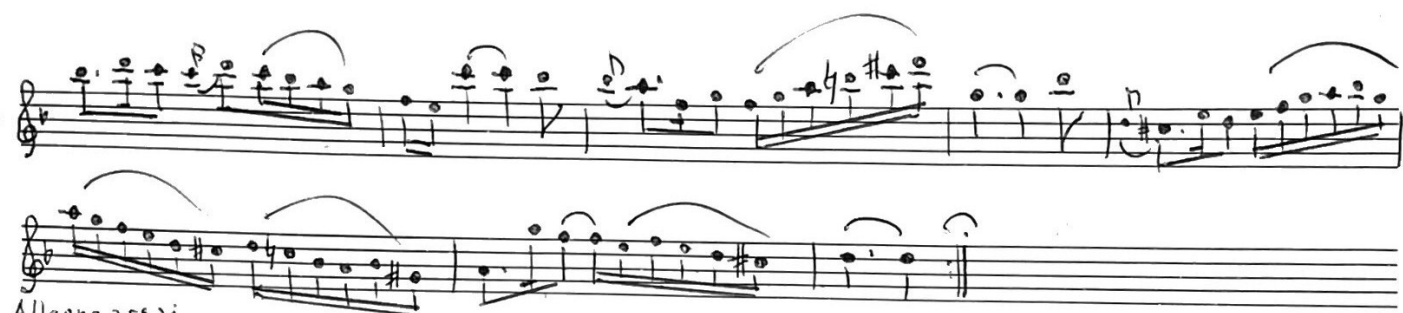
Handwritten musical score for the second system, measures 13-30. The notation continues with similar complex melodic patterns, including beamed notes, trills, and slurs. Measure numbers 15, 20, and 30 are indicated in boxes. The system concludes with a double bar line.

Handwritten musical score for a single melodic line. The notation is on a single staff with a treble clef and a key signature of one flat (B-flat). The music consists of a continuous sequence of eighth and sixteenth notes, often beamed together in groups. There are several measures marked with box numbers: 35, 40, 45, 50, 55, 60, 65, 70, and 75. The piece concludes with a double bar line.

*Siciliano*

Handwritten musical score for a single melodic line. The notation is on a single staff with a treble clef and a key signature of one flat (B-flat). The tempo/mood is indicated by the word "Siciliano". The music features a slower, more lyrical melody with many slurs and ties. There are measures marked with box numbers: 5, 10, 15, and 20. The piece ends with a double bar line.





Allegro assai

